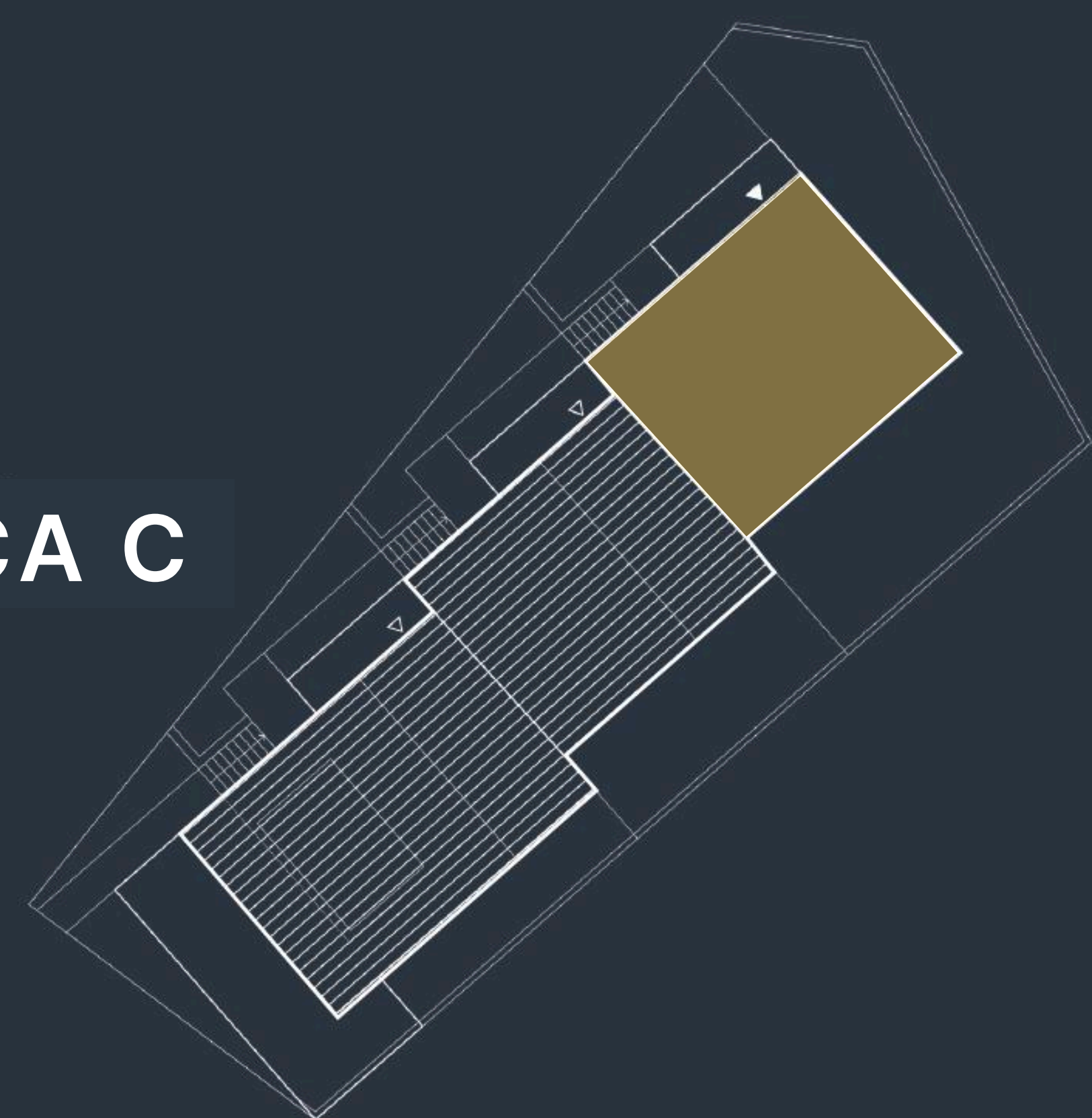
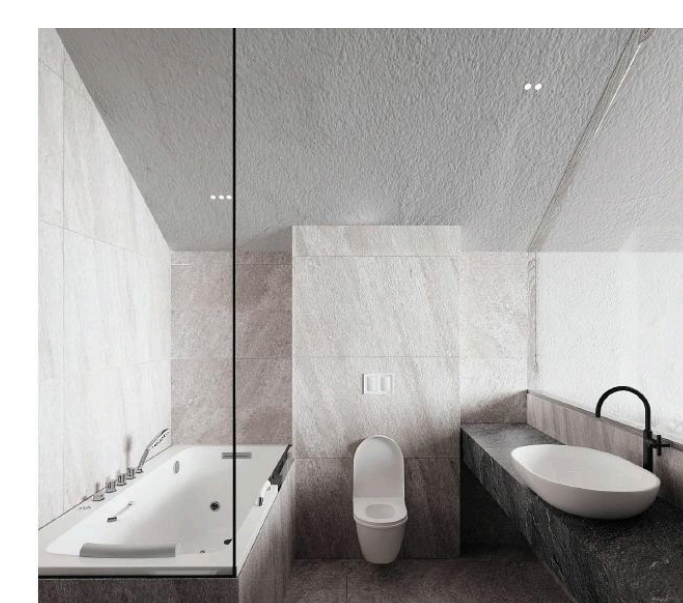
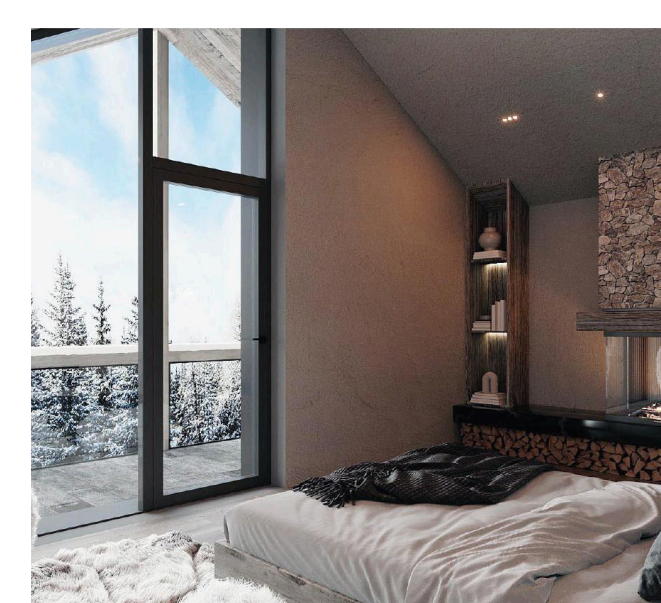




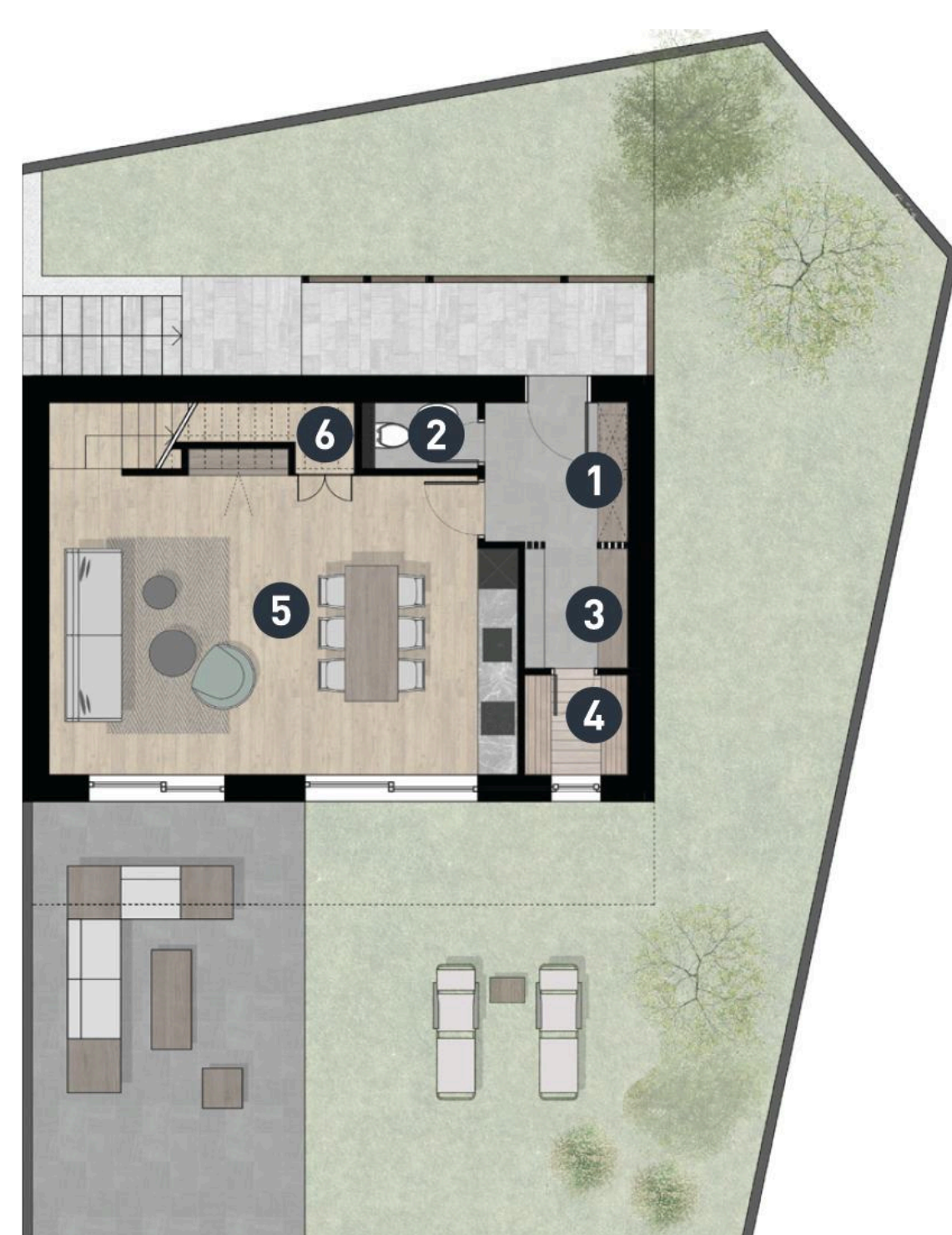
## KUĆA C



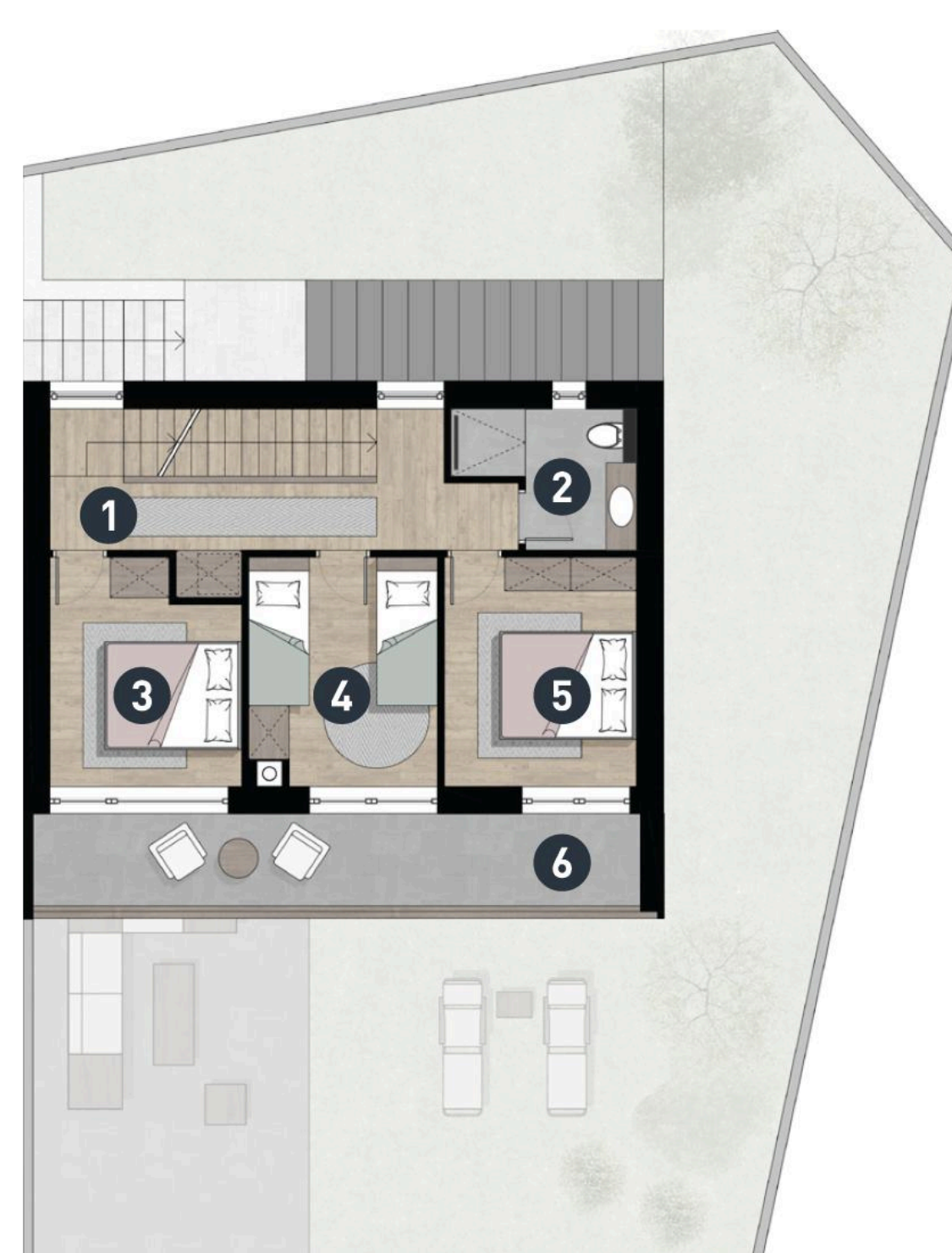
Kuća C		m <sup>2</sup>
1	Vetrobran	4,51
2	Toalet	1,75
3	Skijašnica	2,79
4	Sauna	2,33
5	Dnevni boravak	31,18
6	Ostava	1,86
<b>Prizemlje</b>		<b>44,42</b>
1	Hodnik 1. sprat	10,10
2	Kupatilo	4,57
3	Soba 1	8,94
4	Soba 2	9,62
5	Soba 3	9,69
6	Terasa 1. sprat	6,09
<b>1 Sprat</b>		<b>49,01</b>
1	Hodnik potkrovlje	1,26
2	Kupatilo	6,46
3	Soba 4a	18,41
4	Terasa potkrovlje	3,98
<b>Potkrovlje</b>		<b>30,11</b>
<b>UKUPNO</b>		<b>123,54</b>



### PRIZEMLJE



### I SPRAT



### POTKROVLJE

