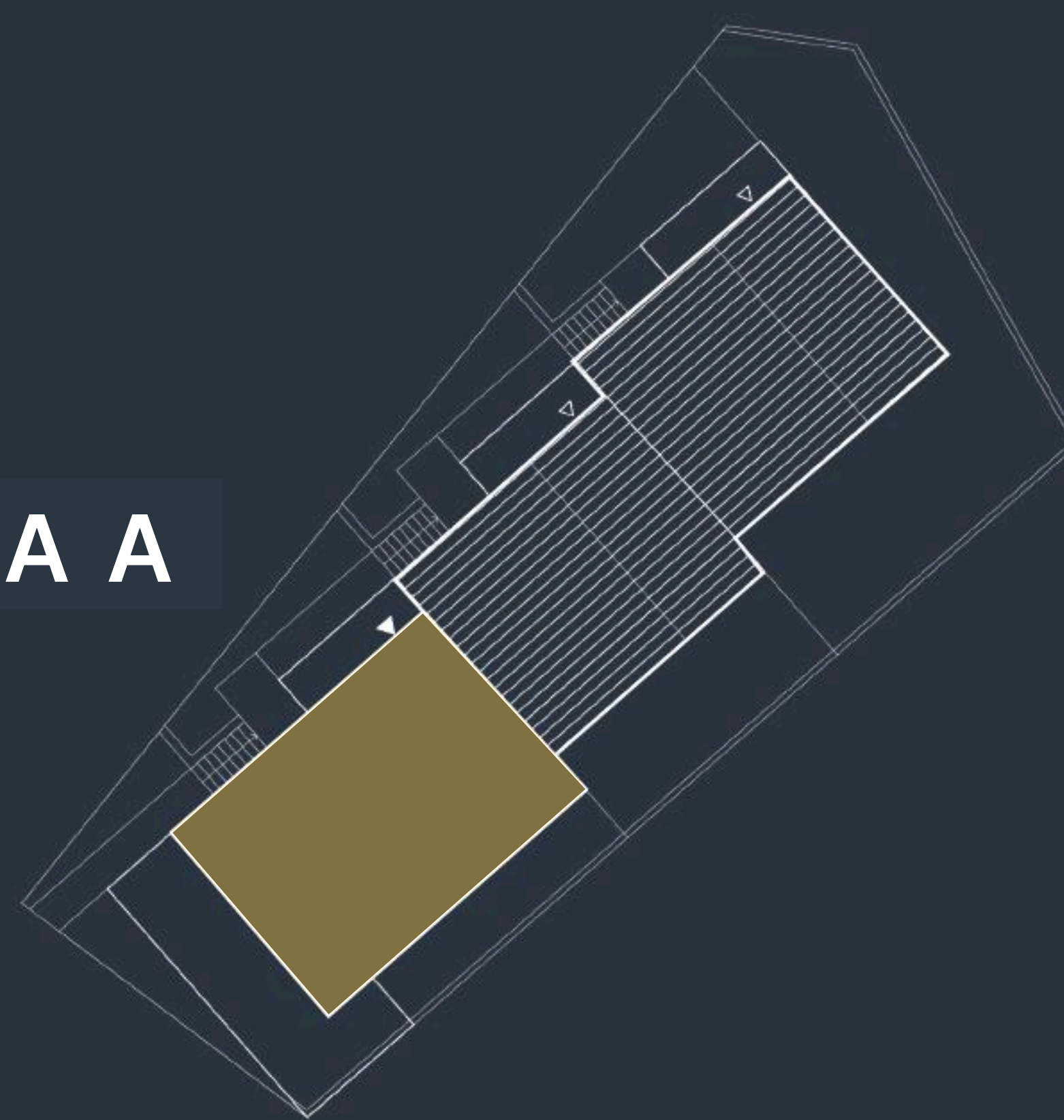
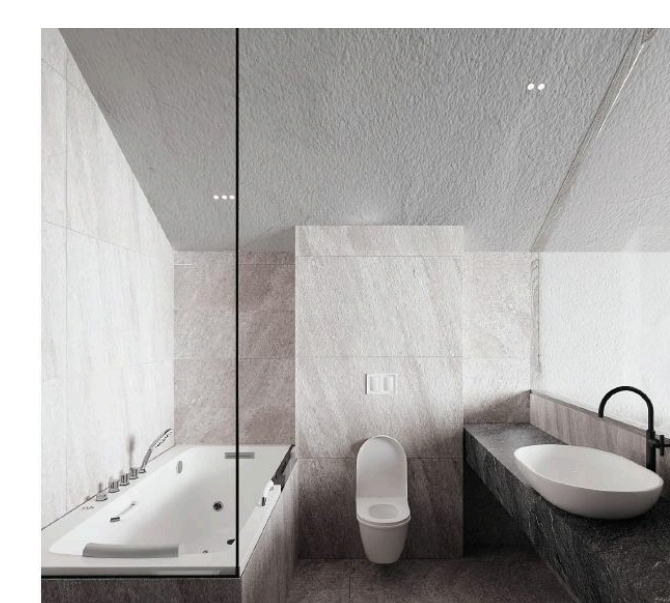
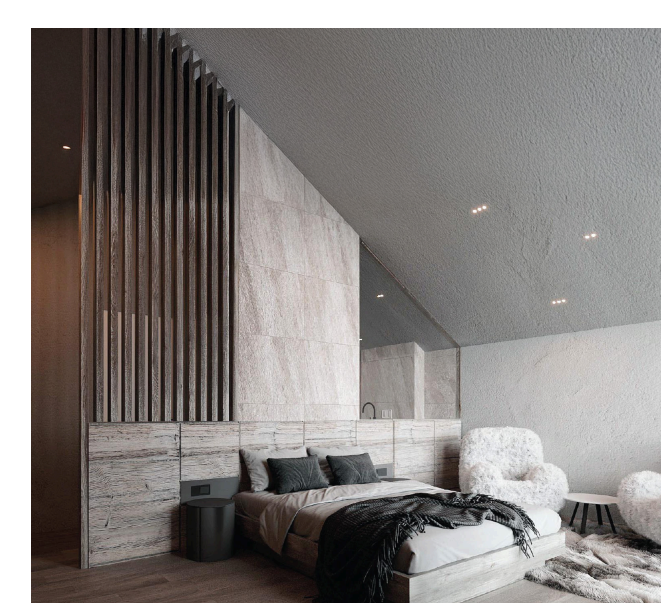
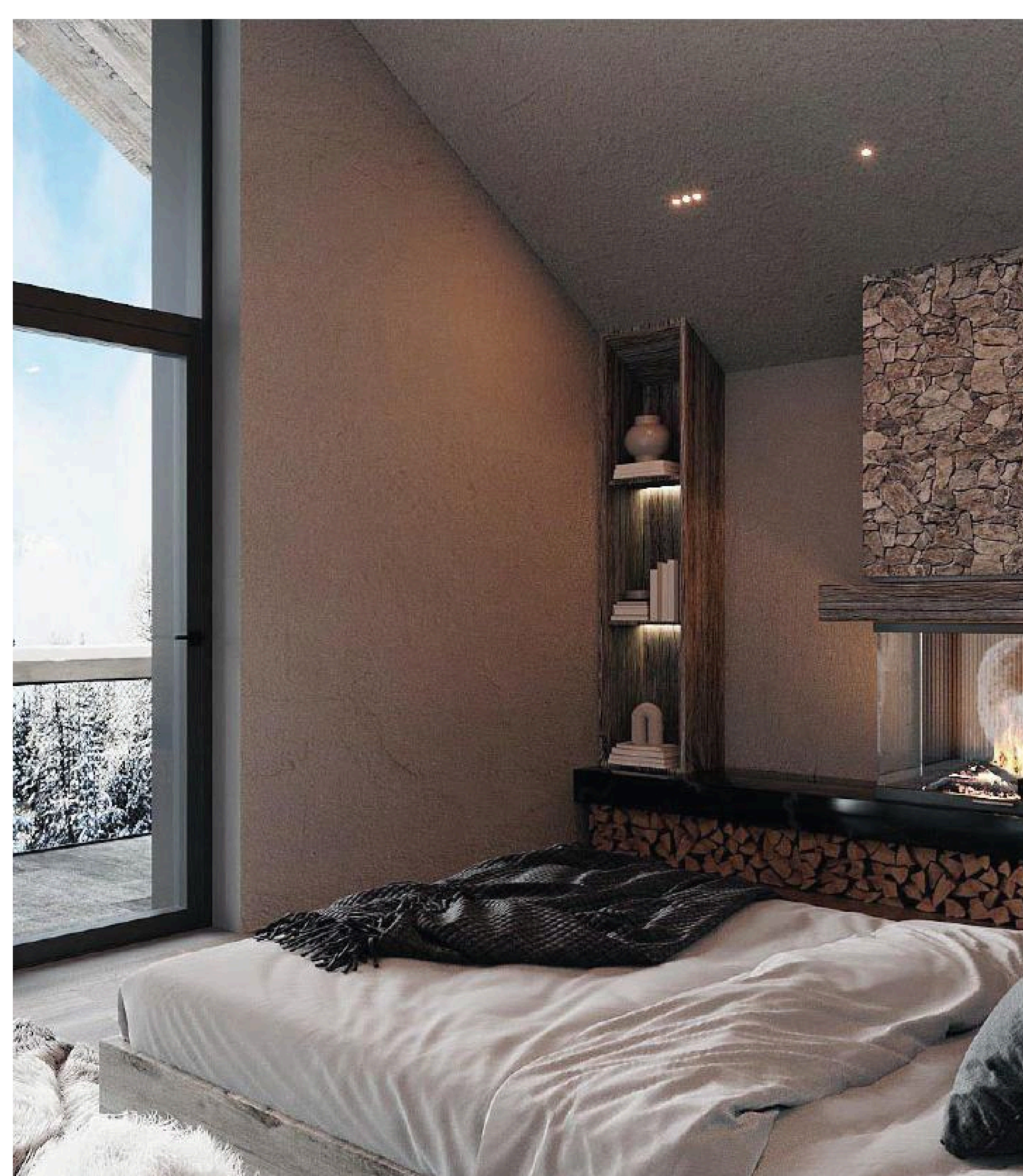




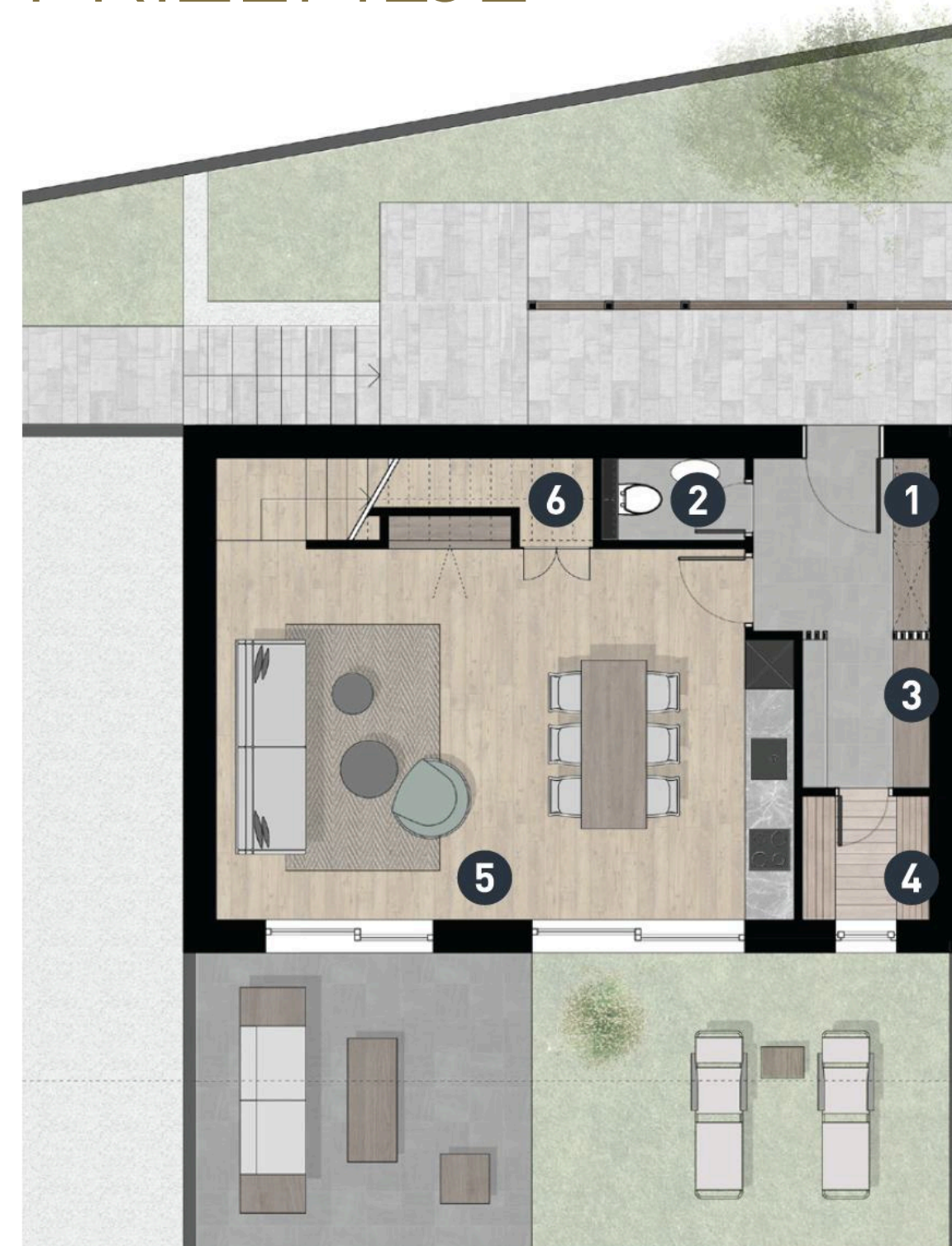
KUĆA A



Kuća A		m ²
1	Vetrobran	4,51
2	Toalet	1,75
3	Skijašnica	2,79
4	Sauna	2,33
5	Dnevni boravak	31,18
6	Ostava	1,86
Prizemlje		44,42
1	Hodnik 1. sprat	10,10
2	Kupatilo	4,57
3	Soba 1	8,94
4	Soba 2	9,62
5	Soba 3	9,69
6	Terasa 1 sprat	13,20
1 Sprat		56,12
1	Hodnik potkrovlje	2,69
2	Kupatilo	6,46
3	Soba 4	18,41
4	Soba 5	14,53
5	Terasa potkrovlje	3,98
Potkrovlje		46,07
UKUPNO		146,61



PRIZEMLJE



I SPRAT



POTKROVLJE

